

Integrated Watershed Management Programme



**State Level Nodal Agency Uttarakhand
WMD, Dehradun**

Progress

- ❖ Watershed Management Directorate nominated as the State Level Nodal Agency (SLNA) as per the Common Guidelines vide G.O. No. 591/2008/XIII-II/51(5)/2005 dt. 11.09.2008.
- ❖ SLNA members nominated vide G.O. No. 1217/ /XIII-II/51(5)/2005 dt. 19.12.2008.
- ❖ District Watershed Development Units (DWDU) formed as per the G.O. No. 1216/XIII-II/51(5)/2005 dt. 19.12.2008.
- ❖ Technical Committee formed in SLNA as per the G.O. No. 42/2008/XIII-II/51(5)/2005 dt. 24.02.2009.

- ❖ Chief Project Director of Watershed Management Directorate nominated as the Chief Executive Officer of SLNA as per the G.O. No. 41/XIII-II/51(5)/2005 dt. 24.02.2009.
- ❖ Additional Director of Watershed Management Directorate nominated as the Additional Chief Executive Officer of SLNA vide G.O. No. 41/XIII-II/51(5)/2005 dt. 24.02.2009.
- ❖ Chief Development Officer of the Districts nominated as the Project Managers of DWDUs vide G.O. No. 101/XIII-II/51(5)/2005 dt. 22.06.2009.

- ❖ Watershed Project Management Unit, Uttarakhand (WPMU) registered under the Society Registration Act 1860 vide order No. 291/2009-10 dt. 23.11.2009. On similar lines District Watershed Project Management Units (DWPMUs) being formed in all the Districts.
- ❖ Integrated Watershed Management Programme to be implemented with the cost sharing of 90 : 10; Central share : State Share.
- ❖ Cost of Rs. 15000 per ha. approved for the hills and Rs. 12000 per ha. for the plains by the Govt. of India.

- ❖ State Perspective and Strategic Plan for 18 years sent to Govt. of India on 15.07.2009. It covers 409 MWS and area of 19.31 lakh ha. with the total outlay of Rs. 2742.52 crores.
- ❖ Preliminary Project Report 2009-10 sent to Govt. of India on 02.09.2009. It covers 65 MWS and area of 1.70 lakh ha. with the total outlay of Rs. 246 crores.
- ❖ Preliminary Project Report presented in Govt. of India on 11.09.2009 and approved vide letter No. K-11012/6/2009-IWMP (Uttarakhand) dt. 16.09.2009.
- ❖ State Perspective and Strategic Plan and Preliminary Project Report presented in SLNA meeting held on 05.10.2009 .
- ❖ Three Sensitization Workshops for Senior Level Officers and PIAs on Common Guidelines for Watershed Development Projects- 2008 have been held since October, 2009.

- ❖ Process of selection of Project Implementation Agencies (PIAs) in progress in the districts.
- ❖ Format for the preparation of Detailed Project Report (DPR) finalized.
- ❖ IWMP Operation Manual, Capacity Development Strategy Manual being finalized.
- ❖ Consortium of Resource Organizations for Capacity Building formed, MoU to be signed.
- ❖ Funds for the setting up SLNA, SLDC and DWDUs, DLDC has been released by the DoLR, Govt. of India Rs. 168 lakhs for the period of Six Months (January, 2010 to June, 2010).

Important Issue to be decided immediately

- ❖ DoLR, Govt. of India in its 9th meeting of the Steering Committee held on 23.12.2009 decided that Reserve Forest areas should not form part of the project area under IWMP.
- ❖ In the State of Uttarakhand more than 64% of the geographical area is forests. Without the treatment of these areas the Watershed Programmes will not have any impact.

- ❖ The Govt. of Uttarakhand has represented in DoLR, Govt. of India that as per Common Guidelines for Watershed Development Projects- 2008 calls for the multi-tier ridge to valley approach, holistic development and saturation of the watersheds. Thus, reserve forest area treatment needs to be included in the IWMP.
- ❖ Moreover the livelihood of the local people is totally dependent on the forests, forests are the source of our water resources which are important for the improvement of livelihood of the locals and water security.

State Perspective and Strategic Plan

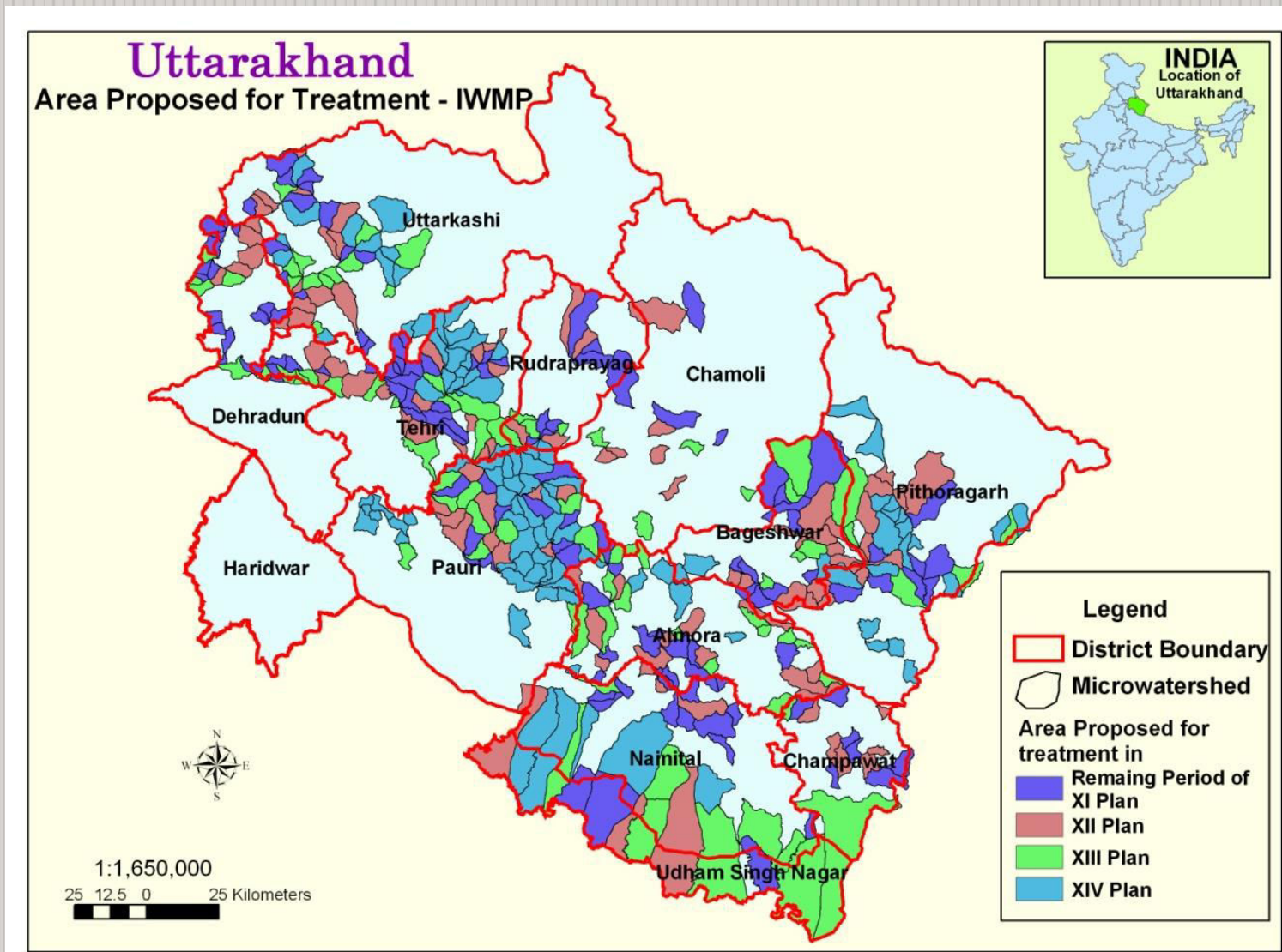
S. No.	Item	Details		
		No.	Area (ha)	
1	Total no. of MWS in the State (excluding district Haridwar)	1110	5112500	
2	Total no. of untreatable MWS	162	1181352*	
3	Total no. of treatable MWS in the State	948	3811148 +120000 (Haridwar)	
4	No. of MWS covered under different schemes	539	1999261	
5	Plan for covering balance 409 micro-watersheds	Balance no. of micro-watersheds not covered till date		
			409	1811887 +120000
		11 th Plan	129	430000
		12 th Plan	101	430000
		13 th Plan	84	464000
	14 th Plan	95	607887	
	Total	409	1931887	

* Either rocky, snow covered or part of the already treated MWS

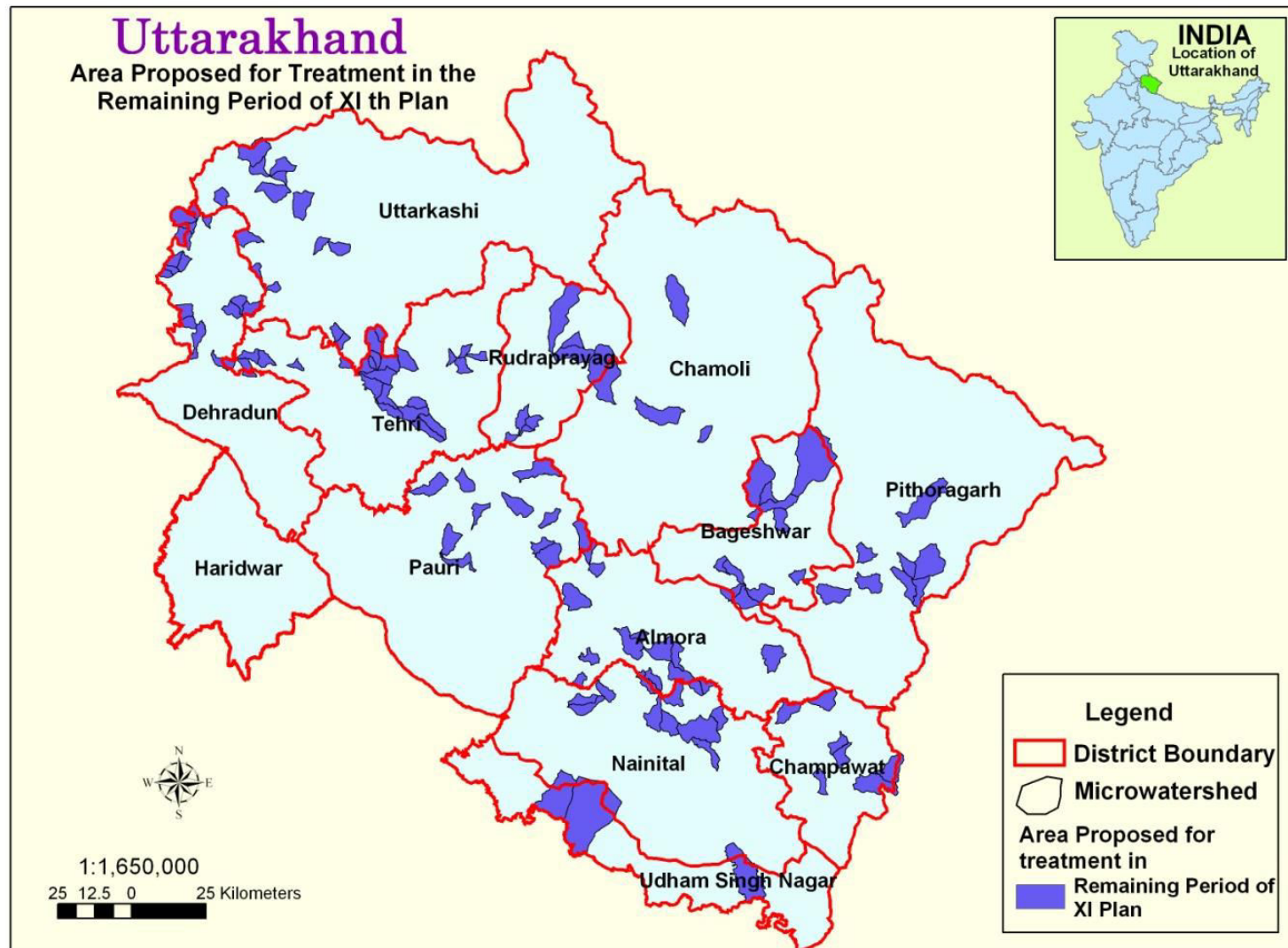
Selection Criteria followed by the State while selecting the micro-watersheds (as per DoLR guidelines)

S. No.	Criteria	Applied or Not
i	Poverty index (% of poor to population)	Applied
ii	% of SC/ ST population	Applied
iii	Actual wages	Applied
iv	% of small and marginal farmers	Applied
v	Ground water status	Applied
vi	Moisture index/ DPAP/ DDP Block	Applied
vii	Area under rain-fed agriculture	Applied
viii	Drinking water	Applied
ix	Degraded land	Applied
x	Productivity potential of the land	Applied
xi	Contiguity to another watershed that has already been developed/ treated	Applied
xii	Cluster approach in the hills (more than one contiguous micro-watersheds in the project)	Applied

State Perspective & Strategic Plan– 18 yrs.



SPSP Area - Proposed During the 11th Plan



Preliminary Project Report 2009-10 (Period 5 Yrs.)

S. No.	Item	Details	
		No.	Area (ha)
1	MWS proposed to be taken from 09-10	65	170000
	No. of projects (clusters)	34	
2	Estimated project cost (Rs. in crores)	246.00	
	Central share	221.40	
	State share	24.60	
	Total	246.00	
3	Amount of 1 st installment (20 %) (Rs. in crores)	49.20	44.280 (Central Share)

A decorative wreath composed of brown, teardrop-shaped leaves and yellow, swirling flourishes arranged in a circular pattern around the central text.

Thanks